

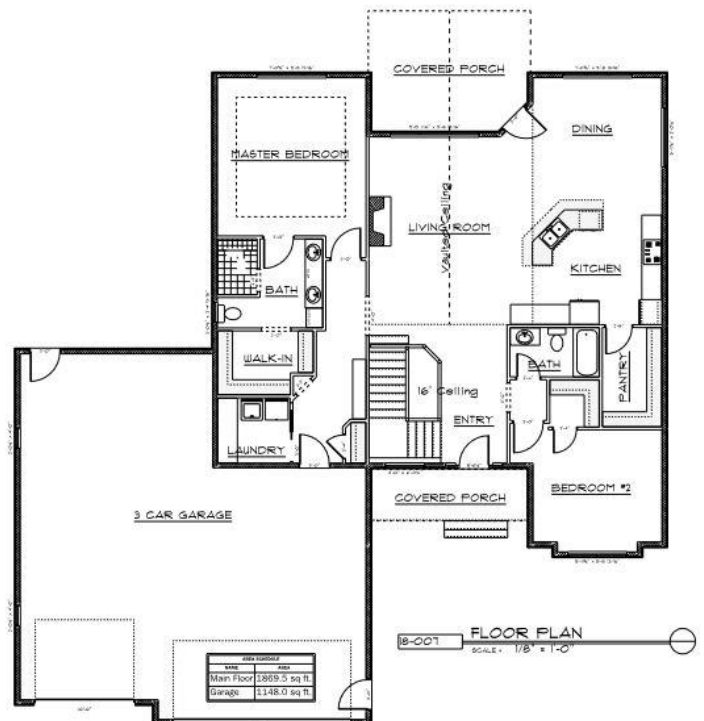
# DIVERSITY HOMES



## Promontory Point, Bismarck

-1,869 SF MAIN LEVEL  
**\$499,900**  
 WITH ADDITIONAL 1,800 SF IN UNFINISHED BASEMENT

- 16' ENTRY WAY CEILINGS,
- OPEN FLOOR PLAN WITH VALTED CEILINGS THROUGHOUT MAIN LIVING AREA
- MAIN FEATURES 2 BEDROOMS, 2 BATHS
- MASTER SUITE INCLUDING CUSTOM TILED SHOWER AND OVERSIZED WALK-IN CLOSET
- MAIN FLOOR LAUNDRY
- DIVERSITY CUSTOM OPEN STAIRCASE
- KITCHEN INCLUDES GRANITE COUNTERTOPS
- MAPLE CABINETS & TRIM
- DIVERSITY SIGNATURE RAILING
- 95% EFFICIENT FURNACE
- 1,148 SF OVERSIZED, HEATED GARAGE WITH  
 HOT/COLD AND FLOOR DRAIN



**Contact:**

Office 701-751-3999  
 Stephanie Metzger 701-220-4490