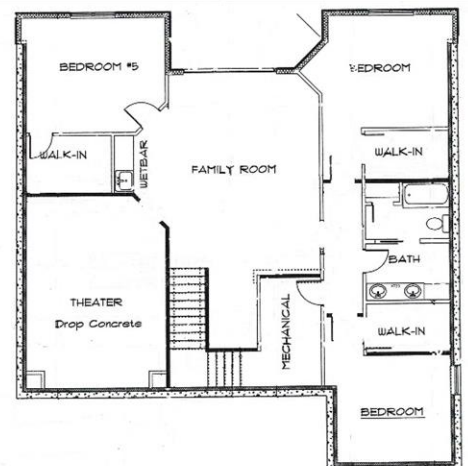
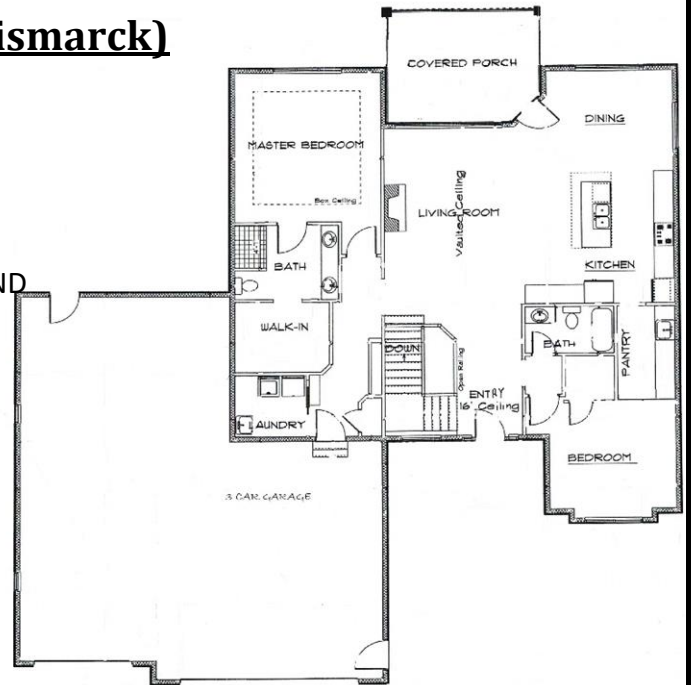


DIVERSITY HOMES



1308 Crest Road. (Bismarck) \$659,900

- 3730 SF OF FINISHED LIVING SPACE
- OPEN FLOOR PLAN WITH A GRAND 16FT HIGH FOYER AND VAULTED CEILINGS THROUGHOUT MAIN LIVING AREA
- FEATURING 5 BEDROOMS, 3 BATHS
- MASTER SUITE INCLUDES CUSTOM TILED SHOWER AND OVERSIZED WALK-IN CLOSET
- MAIN FLOOR LAUNDRY
- KITCHEN HAS DOUBLE OVEN AND A HUGE WALK IN BUTLER PANTRY
- MAPLE CABINETRY AND QUARTZ COUNTERTOPS THROUGHOUT
- DIVERSITY SIGNATURE RAILING WITH OPEN STAIRCASE
- STEP DOWN THEATER ROOM AND WET BAR IN BASEMENT
- BASEMENT WALKOUT WITH FULL GLASS DOORS
- 1,312 SF OVERSIZED, HEATED GARAGE WITH HOT/COLD AND FLOOR DRAIN
- COVERED MAINTENANCE FREE DECK



Contact:

Stephanie Metzger 701-220-4490
Office 701-751-3999